

LIVE • WORK • LEARN • PLAY

WESTGATE@CRANE

Newcomer & Relocation Guide



FIND YOUR PLACE TO
**THRIVE IN THE
INDIANA UPLANDS**

COMMUNITIES

HOUSING

SCHOOLS

RECREATION

CULTURE

ENTERTAINMENT

CONTENTS

Summer 2023

| | |
|---|----|
| WestGate@Crane Technology Park WestGate is primed to become one of the most important research destinations for America's robust defense industry. | 04 |
| Indiana Uplands: 11 Counties, 1 Region Determination and innovation rooted this land, and exceptional collaboration is making it thrive today. | 06 |
| National Security & Defense in The Uplands Advances in technology are energizing the region's deeply rooted cluster of visionary defense anchors, industry leaders, academia, and innovation partners | 08 |
| Home & Community When you encounter the Uplands' combination of urban amenities with strong community ties, you'll understand why so many people who come here want to stay. | 10 |
| Live Whatever housing type you choose in whatever location fits you best, welcome to the Uplands. | 12 |
| Learn Small school feel with high-quality, hands-on experiences inclusive of emerging technologies. | 14 |
| Eat & Drink Let our cultural roots guide you as you eat, drink, and savor your way across the Uplands. | 18 |
| Play What's up in the Uplands? Everything you can possibly imagine. | 28 |
| Events & Festivals You'll feel right at home with welcoming community events and festivals happening all year-round. | 30 |



28

WANDER TO WILDERNESS

Mountain explorers, cyclists, leaf peepers, music lovers, bird watchers, kayakers, hunters, listeners, swimmers, dip-your-toe-in-the-lake-ers-across the Uplands, your leisure is our pleasure.





10

BUDGET TO BOUTIQUE

With the diversity of craft in the Uplands, take advantage of artisan candy and handcrafted Amish goods, farmers' market finds and busy urban shopping centers, rustic antiques and locally sourced materials—all cornerstones of a broad and beautiful marketplace that says: I'm Uplands Made.



18

DINED AND DAZZLED

Eat, drink, and savor your way across the Uplands. From state-favorite steaks to expertly crafted wines, German-inspired entrées to fresh-from-the-farm appetizers, your palate will tell you that this region is made for all cravings delightful and delicious.



14

EDUCATION TO EXCELLENCE

From our network of highly rated elementary and secondary schools to campuses of Indiana University, Ivy Tech, and Vincennes University Jasper Campus, students age 6 to 60 pursue their dreams every year.

WESTGATE@CRANE

Newcomer & Relocation Guide

Cover Photo: A vision for how WestGate@Crane will look in 10 years. Drawing top talent from across the nation with a bold lifestyle district, this tech park will meet daily needs of a thriving defense sector and provide powerful and meaningful connections to the natural environment.

This publication was produced by:

Regional Opportunity Initiatives
100 South College Avenue, Suite 240
Bloomington, IN 47404

ROI is a nonprofit organization with a mission to advance economic and community prosperity in the 11 counties of the Indiana Uplands region (Brown, Crawford, Daviess, Dubois, Greene, Lawrence, Martin, Monroe, Orange, Owen, and Washington).

ROI's mission is to grow potential and possibility in the Uplands through a focus on advanced industry sectors, regionalism, transformative school and workforce redesign, and placemaking strategies.

Contributors:

ROI would like to thank Uplands Science and Technology Foundation (USTF), WestGate Academy, Purdue@WestGate, and additional partners for providing content for this publication.

For corrections or additions to this publication or to request copies:

Please contact Betsy Trotzke, Director of Marketing and Communications at betsytrotzke@regionalopportunityinc.org.



REGIONAL
OPPORTUNITY
INITIATIVES



INDIANA
UPLANDS

PROUD PARTNER

©2023 Regional Opportunity Initiatives



WESTGATE@CRANE TECHNOLOGY PARK

Above: Architectural rendering of WestGate One, a new microelectronics hub coming to the tech park in 2024.

Right: Aerial view of WestGate@Crane Technology Park as seen in 2021.

WestGate@Crane is strategically located in the Indiana Uplands region adjacent to NSA Crane, the world's third-largest naval installation and a major national defense research hub.

Serving as the front door to Crane, WestGate is primed to become one of the most important research destinations for America's robust defense industry. It is home to more than 50 private firms working alongside NSA Crane's major tenants, Naval Surface Warfare Center Crane (NSWC Crane) and Crane Army Ammunition Activity (CAAA). More than 50 private companies, including Fortune 500 firms and industry leaders, are on the front lines of American innovation, partnering with the installation and each other.

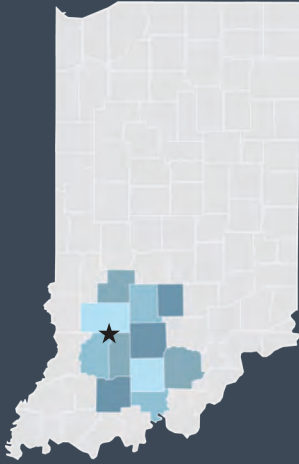
Over the next decade, WestGate anticipates dramatic growth in emerging technology areas, including artificial intelligence, machine learning, trusted microelectronics, modernization of strategic electronics, and hypersonics.



In 2021, WestGate adopted a new revolutionary vision. In the coming years, WestGate will not only welcome the nation's top firms and tech talent, it will also become an experiential landscape. Clusters of activity, mixed-use development, and offerings will activate and celebrate the park's beautiful natural features, such as its woodland landscape, winding creek beds, rolling hills, and open spaces.

We are planning a future where people come to WestGate not just to work but also to live, dine, shop, and play. The future looks bright at WestGate@Crane.

WESTGATE@CRANE QUICK FACTS



Top: Indiana Governor Eric Holcomb (center) joined developers at WestGate for a groundbreaking ceremony for a new microelectronics campus in November 2022.

Above: The above aerial rendering shows the vision for how WestGate will look as it continues to grow.

Left and Below: Spread across a scenic woodland setting, the vision for the park will tie together an innovative research park with a charming and exciting recreational park.



TECHNOLOGY EXPERTISE:

- Trusted Microelectronics
- Hypersonics
- Artificial Intelligence
- Machine Learning

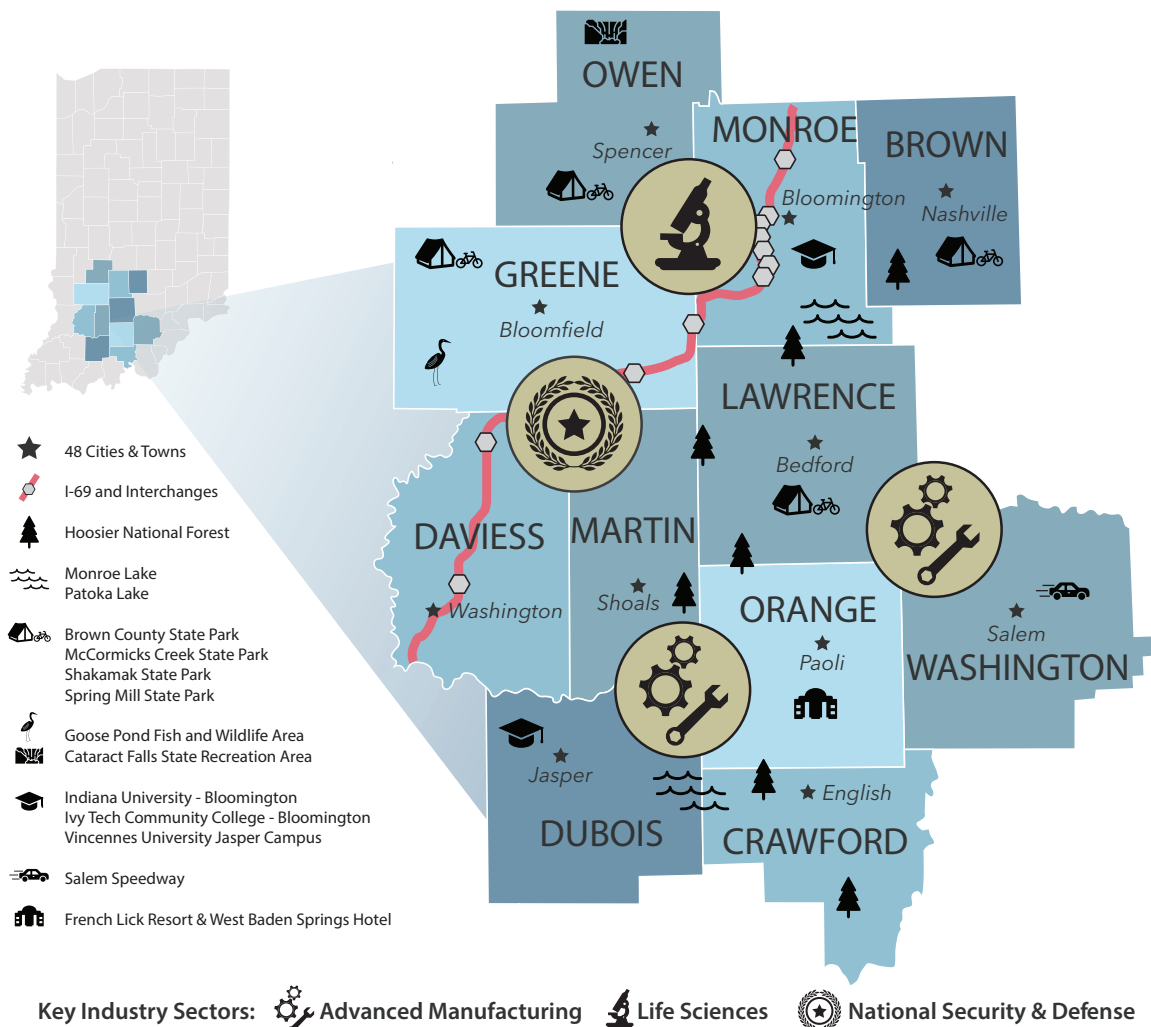
 **750** Acres

 **50+** Companies

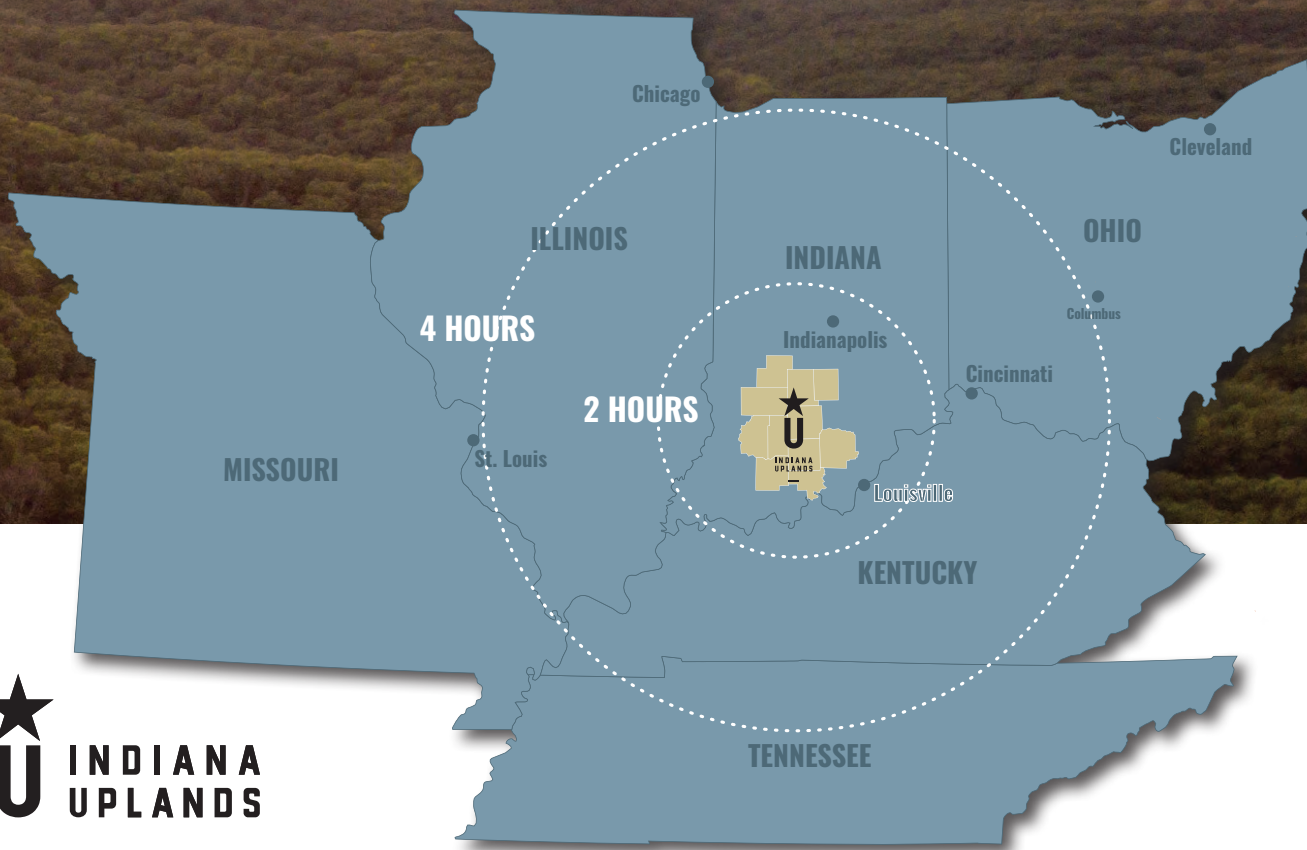
 **100 Gigabit**
internet provided by
Smithville Fiber



A REGION ON THE RISE



SE

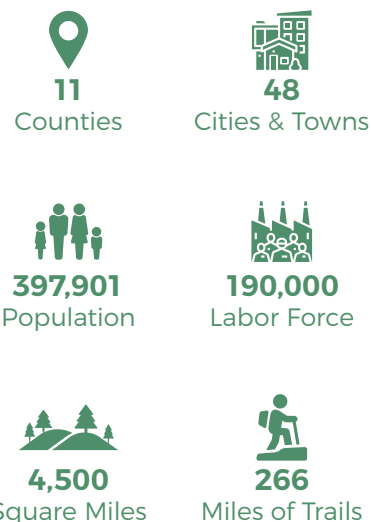


U INDIANA UPLANDS

Ours is a large region rich in cultural and physical amenities. With 4,500 square miles, we cover a lot of ground in Indiana. Generations ago, we planted ourselves here as farmers, manufacturers, and dreamers. Determination and innovation rooted this land, and exceptional collaboration is making it thrive today.

Today, our region boasts unique assets unlike any other in Indiana or beyond. A region of global sophistication and innovation complemented by extraordinary cultural and physical assets:

- A federal laboratory that maintains a central role in the U.S. defense operations
- Highly concentrated industry clusters with globally competitive firms
- A major research university and ample opportunities for high-tech post-secondary education
- Abundant natural assets that provide quality of life, recreation, and tourism
- One of the most significant U.S. interstate highway projects connecting the I-69 corridor from Indianapolis to Evansville
- A highly mobile workforce, commuting daily across county lines and throughout the region to support growing high-tech industries



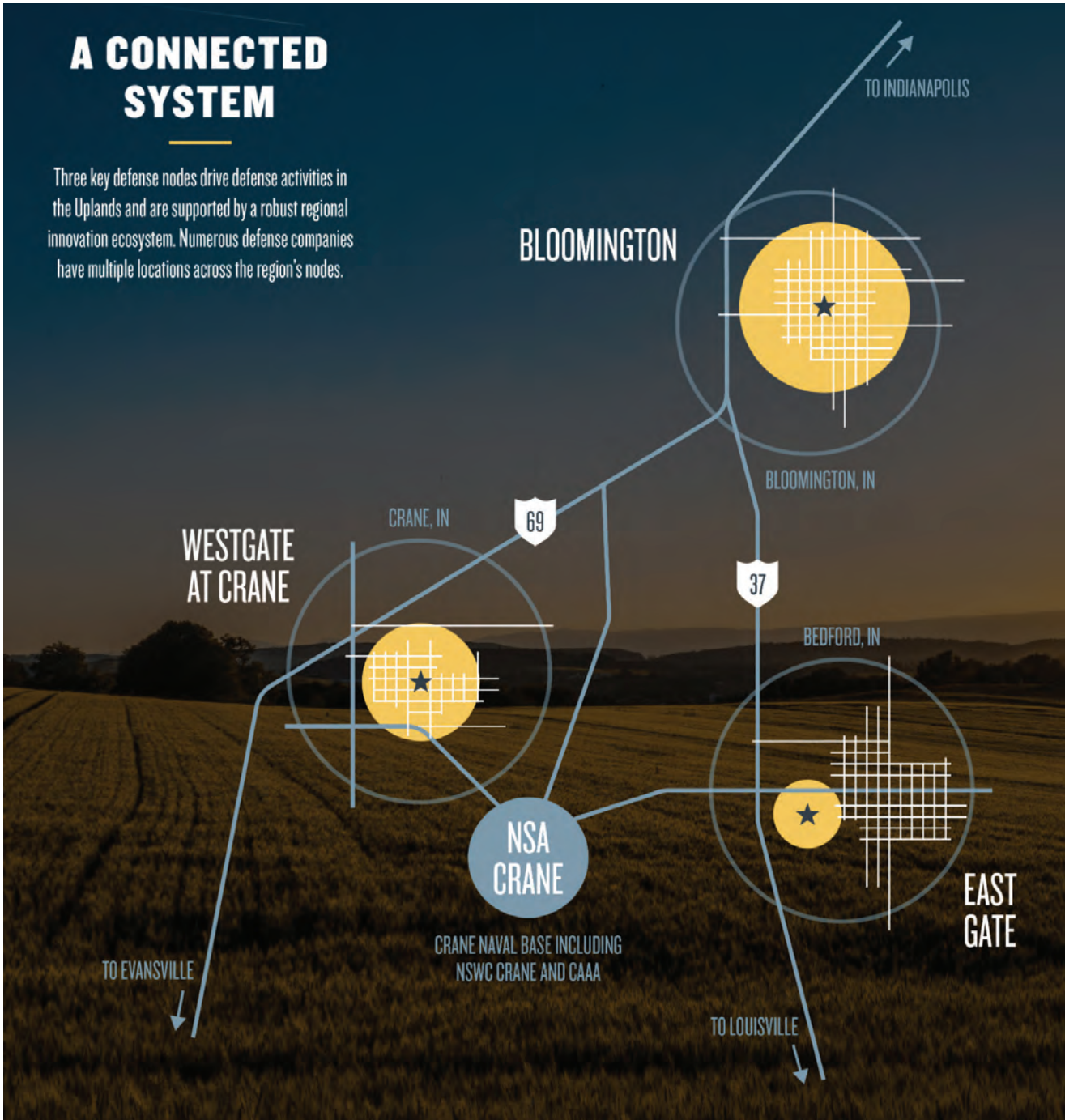
A soldier in camouflage uniform and sunglasses, holding a large American flag, looking upwards. The soldier's name tag reads "DOBBS".

NATIONAL SECURITY & DEFENSE

Advances in technology are energizing the region's deeply rooted cluster of visionary defense anchors, industry leaders, academia, and innovation partners.

A CONNECTED SYSTEM

Three key defense nodes drive defense activities in the Uplands and are supported by a robust regional innovation ecosystem. Numerous defense companies have multiple locations across the region's nodes.



The Uplands is seven times more concentrated in federal civilian defense employment than communities across the country.



For every ten jobs at NSA Crane, more than six jobs exist in defense-related industry and activities throughout the region.

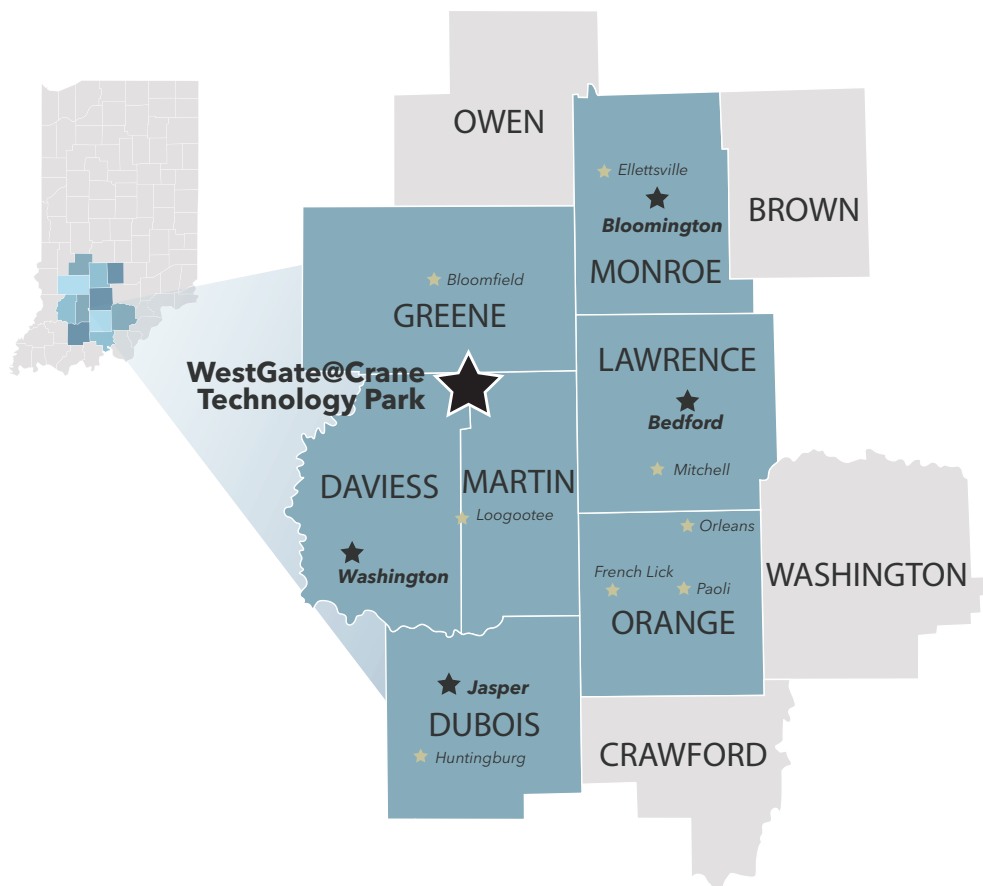


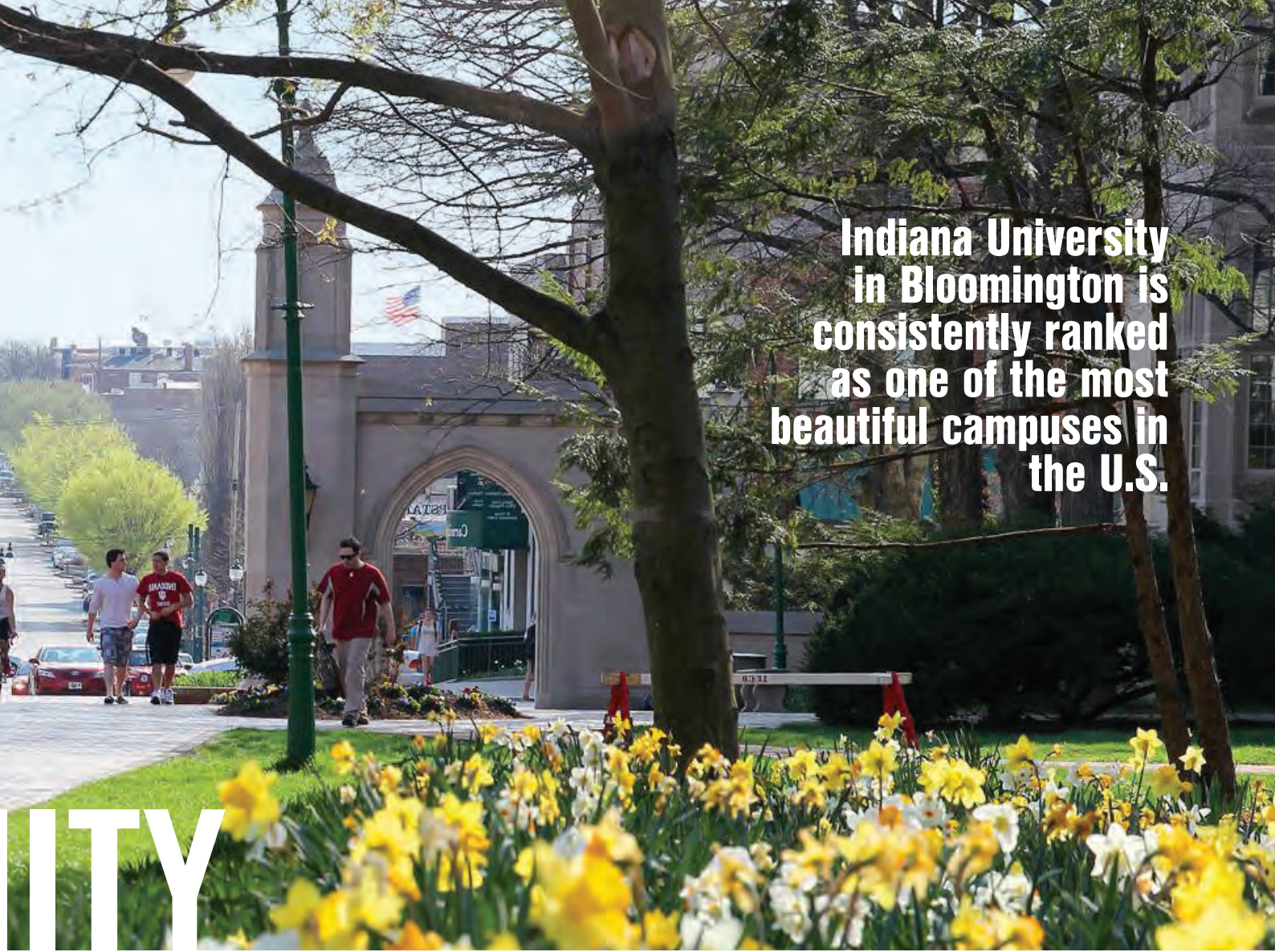
NSA Crane and regional defense contractors have a combined economic impact of over \$3 billion annually for the Uplands region and growing.



HOME & COMMUNITY

| Distance from WestGate | Uplands Community | Population in 2021 |
|------------------------|-------------------|--------------------|
| 10 miles | Bloomfield | 2,251 |
| 16 miles | Loogootee | 2,599 |
| 28 miles | Bedford | 13,794 |
| 30 miles | Washington | 12,040 |
| 35 miles | Bloomington | 79,968 |
| 37 miles | Jasper | 16,713 |
| 37 miles | Mitchell | 3,934 |
| 40 miles | French Lick | 1,739 |
| 41 miles | Ellettsville | 6,588 |
| 42 miles | Orleans | 2,103 |
| 44 miles | Huntingburg | 6,422 |
| 47 miles | Paoli | 3,625 |





**Indiana University
in Bloomington is
consistently ranked
as one of the most
beautiful campuses in
the U.S.**

ITY



Welcome to where you belong.

Uplands neighbors are unlike any others: We meet you at county fairs and on park benches, at the lake and at community events, in neighborhoods and on campuses. We pour time, energy, and resources into our communal success, supporting each other through thick and thin. When you encounter the Uplands' combination of urban amenities with strong community ties, you'll understand why so many people come here want to stay.



In the following pages, you'll find information you need to find your home near WestGate@Crane.

Explore communities, schools, events, and more for six counties near WestGate@Crane: Daviess, Dubois, Greene, Lawrence, Martin, Monroe, and Orange Counties.

WE





FINDING THE RIGHT HOME

The first rule of real estate – location, location, location. The Uplands provides many choices when determining the best place to live. Do you want to live downtown or in the woods? Do you want to buy a newly constructed home? A historic house more your type? Do you want to rent? The location you are looking for can be found here.

Exciting things are happening in the Uplands. Communities and developers have been working hard to grow our housing inventory. This past year, just with funding through the State of Indiana’s Regional Economic Acceleration and Development Initiative (READI), developers are adding over 400 units near WestGate. Watch for additional sale options at Westcott, just minutes from the tech park. Or, check out Country Court V in nearby Loogootee. Rental units are also in progress in the newly developed University Heights Apartments in Jasper or at Hopewell in Bloomington. Check out the resources below to find exactly what you are looking for in your next home.



Cypress Point in Washington includes six apartment buildings offering 1,000-1,200 sq. ft. apartments in 1-3-bedroom configurations.

Interested in buying a home, town-home, or condo? Check out these REALTOR association websites:

- www.homefinder.org (Monroe, Greene, and Owen counties)
- www.swindianarealtors.com (Daviss, Dubois, and Martin counties)
- www.bedfordboardofrealtors.com (Lawrence county)
- www.sira.org (Orange county)

Prefer to rent? The Uplands is expanding rental housing choices in all of its communities. For the most up-to-date information, contact your local economic development organization.

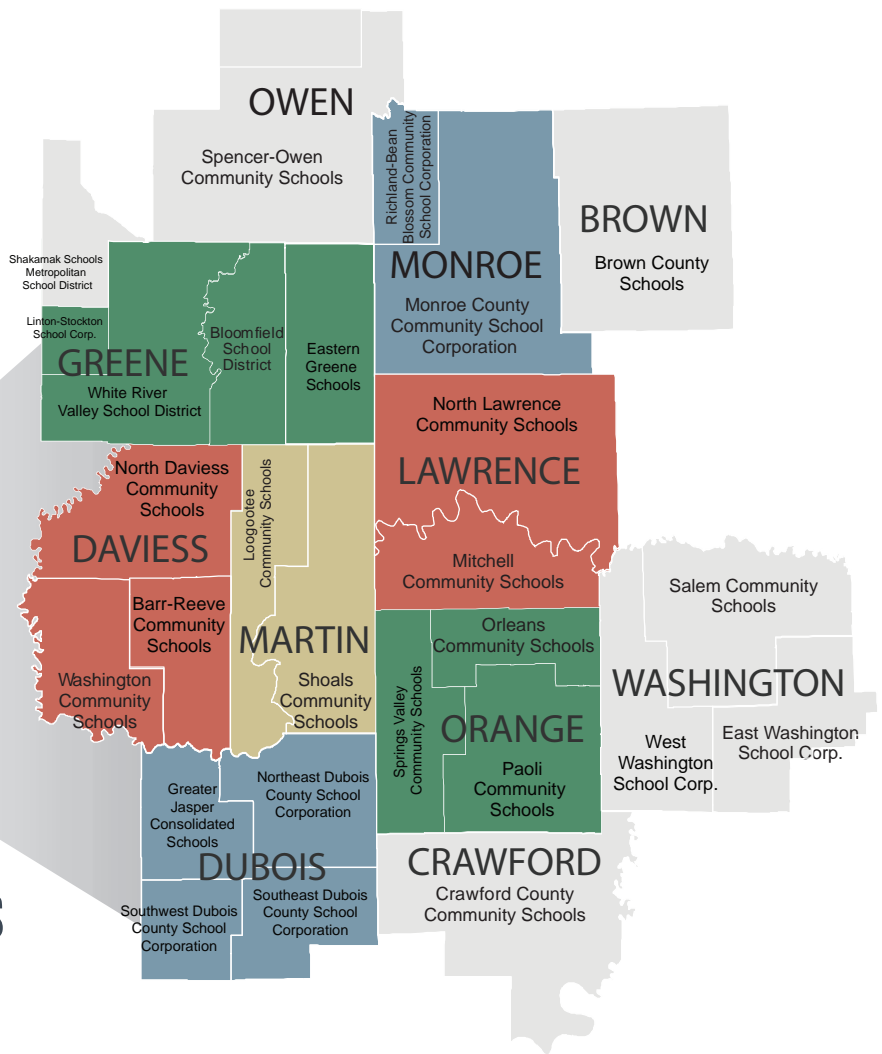
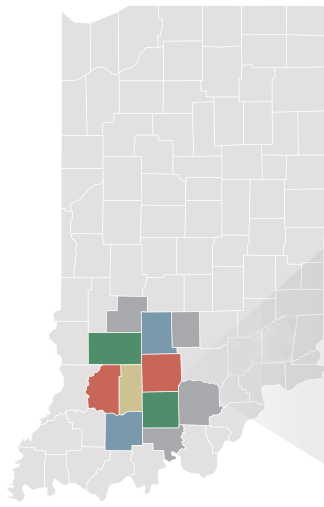
- Daviess County Economic Development Corporation, 812-254-1500
- Dubois Strong, 812-482-9650
- Greene County Economic Development Corporation, 812-659-2109
- Lawrence County Economic Growth Council, 812-275-4493
- Martin County Economic Development Corporation, 812-295-4800
- Bloomington Economic Development Corporation (Monroe), 812-335-7346
- Orange County Economic Development Partnership, 812-936-3388

Whatever housing type you choose in whatever location fits you best, welcome to the Uplands. We are happy to have you.

LEARN



EDUCATION IN THE UPLANDS



PUBLIC K-12 SCHOOLS

Public education in the Indiana Uplands is different. Regardless of size, school districts across the region offer experiences that are high-quality, hands-on, and inclusive of emerging technologies. Innovative programming is preparing students for high-tech careers after graduation. Through a commitment to design thinking and relevancy, schools in the Uplands are designing learning experiences that ensure our students are ready for the opportunities ahead.

Project Lead the Way: A transformative learning experience for PreK-12 students, that creates engaging, hands-on classroom environments and empowers students to develop knowledge and skills needed to thrive. PLTW curricular pathways are in computer science, engineering, and biomedical science.

Digital Fabrication Labs: With state-of-the-art equipment and instruction, these in-school labs are helping to develop a region of makers ready to excel in the

next generation of advanced STEM careers. Students can access 3D printing, laser cutting, CNC routing, vinyl cutting, and microelectronics equipment to stimulate experiential learning, prototyping, creativity, and problem-solving activities.

Entrepreneurship Programming: The Uplands is a region of makers and tinkers. Schools are adopting an entrepreneurial mindset and implementing programs to support the growth of entrepreneurs in their own communities. Industry partners are eager to mentor and support the development of young entrepreneurs through pitch competitions, on-site guidance, and by providing a welcome invitation to visit their own companies.

STEM Pathways: A variety of relevant STEM pathways have been developed by school districts seeking to align learning with in-demand STEM careers. Some examples of hands-on and engaging STEM pathways include advanced manufacturing, engineering, computer science, and biotechnology.

Student-Run Businesses: Uplands high school students are gaining real-world work experiences through student-run businesses embedded in school environments. From manufacturing to printing and from machining to coffee shops, teenagers are thriving as employees, leaders, and entrepreneurs. They are gaining employability skills and experience with real work environments to help develop career interests and skills to pursue further upon graduation.

UpSkill Work & Learn: This modern youth apprenticeship program offers students the chance to discover career interests and pathways and employers the opportunity to grow their workforce. UpSkill provides students with a 2-3 year high-quality work-based learning opportunity with a regional employer. Participating students gain paid employment, on-the-job and related classroom instruction aligned to selected pathways, and dual credit with partnering postsecondary institutions.

Daviess County Schools

Barr-Reeve Community Schools

- Students: 990
- Elementary Schools: 1
- Middle & High Schools: 1
- » **Program Highlights:**
 - Project Lead the Way STEM
 - UpSkill Work & Learn program
- Website: barr.k12.in.us

North Daviess Community Schools

- Students: 1,128
- Elementary Schools: 1
- Middle & High Schools: 1
- » **Program Highlights:**
 - Project Lead the Way STEM
 - Endorsed Indiana Early College High School
- Website: ndaviess.k12.in.us

Washington Community Schools

- Students: 2,408
- Elementary Schools: 4
- Middle Schools: 1
- High Schools: 1
- » **Program Highlights:**
 - Elementary makerspaces
 - Project Lead the Way STEM
 - In-Mac Design & Innovation Studio
 - Pathways aligned to regional key sectors
 - Endorsed Indiana Early College High School
- Website: washingtoncommunitieschools.org

Dubois County Schools

Greater Jasper Consolidated Schools

- Students: 3,214
- Elementary Schools: 2
- Middle Schools: 1
- High Schools: 1
- » **Program Highlights:**
 - Project Lead the Way STEM
 - Pathways aligned to regional key sectors
 - Countywide College & Career Readiness continuum
- Website: www.gjcs.k12.in.us



Northeast Dubois County School Corporation

- Students: 838
- Elementary Schools: 1
- Middle Schools: 1
- High Schools: 1
- » **Program Highlights:**
 - Elementary makerspaces
 - In-Mac Design & Innovation Studio (middle school)
 - Project Lead the Way STEM
 - Pathways aligned to regional key sectors
 - Endorsed Indiana Early College High School
- Website: www.nedubois.k12.in.us

Southeast Dubois County School Corporation

- Students: 1,250
- Elementary Schools: 2
- Middle Schools: 1
- High Schools: 1
- » **Program Highlights:**
 - Project Lead the Way STEM
 - Pathways aligned to regional key sectors
 - Countywide College & Career Readiness continuum
- Website: www.sedubois.k12.in.us

Southwest Dubois County School Corporation

- Students: 1,871
- Elementary Schools: 2
- Middle Schools: 1
- High Schools: 1
- » **Program Highlights:**
 - Dual Language Immersion Program
 - In-Mac Design & Innovation Studio
 - Project Lead the Way STEM
 - Pathways aligned to regional key sectors
 - Indiana College Core dual credit
 - Countywide College & Career Readiness continuum
- Website: www.swdubois.k12.in.us

Greene County Schools

Bloomfield School District

- Students: 813
- Elementary Schools: 1
- Middle & High Schools: 1
- » **Program Highlights:**
 - Project Lead the Way
 - Digital Fabrication Labs
 - Endorsed Indiana Early College High School
- Website: www.bloomfield.k12.in.us

Eastern Greene Schools

- Students: 1,121
- Elementary Schools: 1
- Middle Schools: 1
- High School: 1
- » **Program Highlights:**
 - Indiana College Core dual credit
- Website: www.egreene.k12.in.us

Linton-Stockton School Corporation

- Students: 1,351
- Elementary Schools: 1
- Middle Schools: 1
- High School: 1
- » **Program Highlights:**
 - Project Lead the Way
 - Elementary makerspace
 - Digital Fabrication Labs
 - Emerging Indiana Early College High School
 - Connection Center-Career Resource Center
 - Miner Swag Shop student-run business
- Website: www.lssc.k12.in.us

White River Valley School District

- Students: 790
- Elementary Schools: 1
- Middle Schools: 1
- High School: 1
- » **Program Highlights:**
 - Makerspaces
 - Project Lead the Way
 - Student Precision Machining program
 - Wolverine Enterprises student-run business
- Website: www.wrv.k12.in.us

Lawrence County Schools

Mitchell Community Schools

- Students: 1,499
- Elementary Schools: 2
- Middle Schools: 1
- High School: 1
- » **Program Highlights:**
 - Digital Fabrication Labs
 - Shared courses with COSMOS (Collaboration of Shoals, Mitchell & Orleans Schools)
 - Pathways aligned to regional key sectors
 - UpSkill Work & Learn program
 - Indiana College Core dual credit
 - Makerspaces
 - Project based learning
 - Engineering student-run business
- Website: www.mitchell.k12.in.us

North Lawrence Community Schools

- Students: 4,340
- Elementary Schools: 5
- Middle Schools: 1
- High School: 1
- » **Program Highlights:**
 - Project Lead the Way
 - Makerspaces
 - UpSkill Work & Learn program
 - Emerging Indiana Early College High School
- Website: www.nlcs.k12.in.us

Martin County Schools

Loogootee Community Schools

- Students: 760
- Elementary Schools: 1
- Middle Schools: 1
- High School: 1
- » **Program Highlights:**
 - Project Lead the Way
 - Pathways aligned to regional key sectors
 - Lion Manufacturing student-run business
 - High School dual credit pathways
 - Indiana College Core dual credit
- Website: www.loogootee.k12.in.us

Shoals Community Schools

- Students: 619
- Elementary Schools: 1
- Middle Schools: 1
- High School: 1
- » **Program Highlights:**
 - Digital Fabrication Labs
 - Shared courses with COSMOS (Collaboration of Shoals, Mitchell & Orleans Schools)
 - UpSkill Work & Learn program
 - Shoals Grounds student-run business
 - Pathways aligned to regional key sectors
 - Pursuing Indiana Early College High School
 - Project based learning
- Website: www.shoals.k12.in.us



Monroe County Schools

Monroe County Community School Corporation

- Students: 10,483
- Elementary Schools: 14
- Middle Schools: 3
- High School: 5
- » **Program Highlights:**
 - STEM to Them Mobile Makerspace
 - Project Lead the Way
 - Digital Fabrication Labs
 - INcubatoredu & mxINCedu entrepreneurship programs
 - Academy of Science & Entrepreneurship
 - UpSkill Work & Learn program
 - Pursuing Indiana Early College High School
- Website: www.mccsc.edu

Richland-Bean Blossom Community School Corporation

- Students: 2,633
- Elementary Schools: 2
- Middle Schools: 1
- High School: 1
- » **Program Highlights:**
 - Project Lead the Way
 - Entrepreneurship Programming
 - Digital Fabrication Labs
 - Innovative Learning Center
 - Mustang Coffee Corral student-run business
 - UpSkill Work & Learn program
- Website: www.rbbschools.net

Orange County Schools

Orleans Community Schools

- Students: 888
- Elementary Schools: 1
- Middle Schools: 1
- High School: 1
- » **Program Highlights:**
 - Digital Fabrication Lab
 - Makerspaces
 - Shared courses with COSMOS (Collaboration of Shoals, Mitchell & Orleans Schools)
 - UpSkill Work & Learn program
 - Pathways aligned to regional sectors
 - Online Early College High School courses
 - Indiana Department of Education STEM certified elementary
 - Student-run business in manufacturing and design
- Website: www.orleans.k12.in.us

Paoli Community Schools

- Students: 1,287
- Elementary Schools: 1
- Middle Schools: 1
- High School: 1
- Website: www.paoli.k12.in.us

Springs Valley Community Schools

- Students: 835
- Elementary Schools: 1
- Middle Schools: 1
- High School: 1
- » **Program Highlights:**
 - Nationally competitive Sea Perch Robotics teams
- Website: www.svalley.k12.in.us



EAT & DRINK



DAVISS COUNTY

UNIQUE EATS

Aces Restaurant & Bar 908 Bedford Rd. Washington, IN 47501
American Table Family Dining 908 W. National Hwy. Washington, IN 47501
Ashley & Brothers 1000 W. Van Trees St. Washington, IN 47501
Benjy's 800 E. National Hwy. Washington, IN 47501
Big Al's Smokin BBQ 4 E. National Hwy. Washington, IN 47501
Bill and Betty Bobe's Pizza Express 810 S. State Road 57 Washington, IN 47501
Dutchman's Diner 8900 N. 900 E. Odon, IN
Fat Boys Pizza and Ice 415 N. Main St. Montgomery, IN 47558
Gasthof Amish Village 6747 Gasthof Vlg Rd. Montgomery, IN
Hacienda El Asadero 303 E. National Hwy. Washington, IN 47501
Jimbo's Pizza and Wings 104 Cherry Tree Plz. Washington, IN 47501
Kaffee Haus Restaurant & Bakery 600 W. Main St. Odon, IN 47562
Knepp's Country Cafe 4630 E. U.S. Highway 50 Washington, IN 47501
Little Red Grab & Go 2301 E. National Hwy. Washington, IN 47501
Mason's Root Beer Drive In 1201 E. National Hwy. Washington, IN 47501
Reid's Deli & Bakery 727 S. State Road 57 Washington, IN 47501
The Bakery House 406 SW. 2nd St. Washington, IN 47501
The Chamber 422 E. Main St. Washington, IN 47501
The New White Steamer Hamburgers 21 E. Main St. Washington, IN 47501
Tokyo 1735 S. State Road 57 Suite 101 Washington, IN 47501

COFFEE, BEER, COCKTAILS, & MORE

Angle Inn 710 W. National Hwy. Washington, IN 47501
Cherry Ghost Coffee House 6456 E. IN-50 Montgomery, IN 47558
Impressed Coffee Company 1390 IN-57 Washington, IN 47501
Red Bones 4 E. National Hwy. Washington, IN 47501
Sneakers Pub 6605 US-50 Montgomery, IN 47558

DUBOIS COUNTY

UNIQUE EATS

Butchie's 5353 Main St. Dubois, IN 47527
Chicken Place 4970 W. State Road 56 Ireland, IN 47546
Fry'd & Chop'd 312 N. Main St. Huntingburg, IN 47542
Gaslight Pizza & Grill 328 E. 4th St. Huntingburg, IN 47542
Jasper Pub 'N' Grub 514 Jackson St. Jasper, IN 47546
Kelley's Bar and Restaurant 762 E. Highway 164 Celestine, IN 47546
Mama T's Italian Steakhouse 320 E. 4th St. Huntingburg, IN 47542
Midwest Cafe and Market 1102 Newton St. Jasper, IN 47546
Mi Jalisco 239 Baden Strasse Jasper, IN 47546
Mill House Restaurant 1340 Mill St. Jasper, IN 47546
Ohana Hawaiian Bar & Grill 3117 Newton St. Jasper, IN 47546
Oink Inc. Smokehouse 408 Main St. Jasper, IN 47546
Old School Cafe 304 E. 4th St. Huntingburg, IN 47542
Ron's Place 504 N. Van Buren St. Huntingburg, IN 47542
Schnitzelbank 393 3rd Ave. Jasper, IN 47546
Taqueria El Llano 111 W. 28th St. Jasper, IN 47546

COFFEE, BEER, COCKTAILS, & MORE

Headquarters 201 Main St. Jasper, IN 47546
JR's Bar 23 Clay St. Jasper, IN 47546
Kim's Koffee 410 E. 4th St. Huntingburg, IN 47542
Owsley's Lounge 225 River Centre Landing Suite O Jasper, IN 47546
Patoka Lake Winery 900 Dillard Rd. Birdseye, IN 47513
The Rock Bar and Grill 4997 IN-56 Jasper, IN 47546
Rosie's Tavern 4469 S. Ohio St. Saint Anthony, IN 47575
Snaps 1115 Main St Jasper, IN 47546
St. Benedict's Brew Works 126 Jackson St. Jasper, IN 47546
Yard Goat Artisan Ales 417 E. 4th St. Huntingburg, IN 47542



Sushi and steak at Tokyo.



Cheeseburger Dip from Jasper Pub 'N' Grub.

GREENE COUNTY

UNIQUE EATS

Belly and Kecky's Pizzeria 440 E Main St, Bloomfield, IN
Casa Sevilla 635 U.S. Hwy 231 Bloomfield, IN 47424
China House 104 E. Main St. Bloomfield, IN 47424
Cinco De Mayo Mexican Restaurant 200 Hwy 67 Lyons, IN 47443
Crossroads Cafe 1693 W State Rd 54 Bloomfield, IN 47424
Goosepond Pizza 983 W State Rd 54 E, Linton, IN 47441
Jo Etta's Pizza Villa W State Rd 54, Linton, IN 47441
La Fiesta Mexican 1600 A St NE, Linton, IN 47441
Route 67 Ice Cream & Diner 104 E Main St Bloomfield, IN 47424

COFFEE, BEER, COCKTAILS, & MORE

Feed Store Beer Co. 750 W. Main St. Bloomfield, IN 47424
Rejavanated 12 W. Main St. Bloomfield, IN 47424

LAWRENCE COUNTY

UNIQUE EATS

99 Restaurant 2625 16th St. Bedford, IN 47421
Apron Strings Diner 641 X St. Bedford, IN 47421
Asian Pearl Hibachi Grill and Sushi 1309 James Ave. Bedford, IN 47421
Bazaar Cafe 919 15th St. Bedford, IN 47421
Edna's Pizza 279 IN-60, Mitchell, IN 47446
El Compadre 3126 John Williams Blvd. Bedford, IN 47421
El Rancho Del Burrito 1529 L St. Bedford, IN 47421
Grecco's 1309 James Ave. Bedford, IN 47421
JB BBQ 2023 28th St. Bedford, IN 47421
Mamma's and Pappa's 2615 Mitchell Rd. Bedford, IN 47421
Pub 15 919 15th St. Bedford, IN 47421
Railroad Cafe 505 W Main St, Mitchell, IN 47446
Rusty Gator Fork & Ale 1005 16th St, Bedford, IN 47421
Smokin Jim's BBQ and Steakhouse 1414 Bundy Ln. Bedford, IN 47421

COFFEE, BEER, COCKTAILS, & MORE

Bandana's 1220 5th St. Bedford, IN 47421
Carousel Winery 6058 Lawrenceport Rd. Mitchell, IN 47446



Steak and chicken fajitas at Bloomfield's Casa Sevilla.

MARTIN COUNTY

UNIQUE EATS

Bo-Mac's Drive Inn Jct. 50 & 150 Shoals, IN 47581
Break Time Bar & Grill 119 Cooper St. Loogootee, IN 47553
Corner Cafe 201 N. John F. Kennedy Ave. Loogootee, IN 47553
Dairy Master 506 W. Broadway St. Loogootee, IN 47553
Faytastic Pizzas 220 Main St. Shoals, IN 47581
Los Amigos Mexican Restaurant 111 Mill St. Loogootee, IN 47553
Los Bravos Mexican Restaurant 504 W. Broadway St. Loogootee, IN 47553
Pizza Junction 301 N. John F. Kennedy Ave. Loogootee, IN 47553
Stoll's Lakeview Restaurant 15519 U.S. Hwy. 231 North Loogootee, IN 47553
Velma's Diner 304. Main St. Shoals, IN 47581

COFFEE, BEER, COCKTAILS, & MORE

Aunt B's Brewhaha 112 E. Broadway St. Loogootee, IN 47553
Bauer Family Coffee Shop 314 4th St. Shoals, IN 47581



Raspberry white mocha latte and blueberry rolls from Bauer Coffee Shop in Shoals.



Tenderloin sandwich and sidewinder fries from Bedford's Pub 15.

The Low Country Boil from Rusty Gator Fork & Ale in Bedford features andouille sausage, mussels or clams, red potatoes, corn, and shrimp.





Asparagus and Watercress Salad from Sinclair's Restaurant in West Baden Springs.

ORANGE COUNTY

UNIQUE EATS

- 1875: The Steakhouse** 8670 State Road 56 French Lick, IN 47432
The Bagel Bistro 8163 State Road 56 West Ste. C West Baden Springs, IN 47469
Ballard's in the Atrium 8670 State Road 56 West French Lick, IN 47469
Burton's Farmhouse 2547 State Road 37 North Paoli, IN 47454
Cafe Sinclair's 8538 W Baden Ave West Baden, IN 47469
China Wok 346 NW Court St. Paoli, IN 47454
Connie's Country Cooking 300 E. Main St. Paoli, IN 47454
El Compadre 8345 State Road 56 West Baden Springs, IN 47469
French Licks 469 S. Maple St. Suite 105 French Lick, IN 47432
German Cafe 452 S. Maple St. French Lick, IN 47432
Grand Colonnade Restaurant 8670 State Road 56 West French Lick, IN 47432
Hacienda El Asadero 889 N. Gospel St. Paoli, IN 47454
Miguel's Mexican Restaurant 8345 State Road 56 West Baden Springs, IN 47469
Moo Moo's Steakhouse 695 Jack Carnes Wy STE1, French Lick, IN 47432
Nila's Place 8371 State Road 56 West, West Baden Springs, IN 47469
Ohana Hawaiian Bar & Grill 8695 W. Jack Carnes Way French Lick, IN 47432
Porky's BBQ 711 W. Main St. Paoli, IN 47454
Rishi's 8145 W Sinclair St, West Baden Springs, IN 47469
Ritz Restaurant 2008 W. Main St. Paoli, IN 47454
Sinclair's Restaurant 8538 West Baden Ave. West Baden Springs, IN 47469
Speakeasy Pizza 120 W Jefferson St, Orleans, IN 47452
The Superburger 600 W. Main St. Paoli, IN 47454

COFFEE, BEER, COCKTAILS, & MORE

- 33 Brick Street** 480 S. Maple St. French Lick, IN 47432
French Lick Winery 8145 W. Sinclair St. West Baden Springs, IN 47469
Legendz Sports Bar 8695 Jack Carnes Wy #6, French Lick, IN 47432
Power Plant Bar and Grill 8670 State Road 56 West French Lick, IN 47432
Xanadu Coffee & Creamery 8670 W State Road 56 West Baden Springs IN 47432



Strawberry Mango Sorbet from French Licks.



Stop by Bagel Bistro in West Baden Springs to build your own lunch and be sure to add a jumbo pickle.



A trip to West Baden isn't complete without trying one of Sinclair's specialty desserts or the Signature Chocolate Dome.

MONROE COUNTY

AMERICAN & PIZZA

Aver's Pizza 1837 N. Kinser Pike Bloomington, IN
47404 317 E. Winslow Rd. Bloomington, IN 47401

Baldy's Pizza 5440 South Old State Road 37 Bloomington, IN 47401

Bub's Burgers & Ice Cream 480 N. Morton St. Bloomington, IN 47404

Buffa Louie's 114 S. Indiana Ave. Bloomington, IN 47408

Cabin Restaurant & Lounge 4015 South State Road 446 Bloomington, IN 47401

Cafe Pizzeria 405 E. Kirkwood Ave. Bloomington, IN 47408

Carsons BBQ & Catering 3878 W. 3rd St. Bloomington, IN 47401

Chop Shop Market & Table 1915 S Walnut St, Bloomington, IN 47401

Cloverleaf Restaurant 325 E. Winslow Rd. Bloomington, IN 47401
4023 W. 3rd St. Bloomington, IN 47404

Coaches Bar & Grill 245 N. College Ave. Bloomington, IN 47404

Cozy Table 2500 W. 3rd St. Bloomington, IN 47404

Crazy Horse 214 W. Kirkwood Ave. Bloomington, IN 47404

C3 Bar 1505 S. Piazza Dr. Bloomington, IN 47401

Dagwood's Deli 116 S. Indiana Ave. Bloomington, IN 47408

Eric Gordon's Greek's Pizzeria 1425 N. Dunn St. Bloomington, IN 47408

FARMBloomington 108 E. Kirkwood Ave. Bloomington, IN 47408

Fat Dan's Deli 221 E. Kirkwood Ave. Suite 1 Bloomington, IN 47408

Feast Market & Cellar 407 W. Patterson Dr. Bloomington, IN 47403

Hank's Pizza Mac 1280 N. College Ave. Bloomington, IN 47404

Hinkle's Hamburgers 206 S. Adams St. Bloomington, IN 47404

Hive 2608 E. 10th St. Bloomington, IN 47408

Hoosier Bar & Grill 4645 W. Richland Plaza Bloomington, IN 47404

Hopscotch Coffee 235 W. Dodds St. #102, Bloomington, IN 47403

Irish Lion Restaurant & Pub 212 W. Kirkwood Ave. Bloomington, IN 47404

Janko's Little Zagreb 223 W. 6th St. Bloomington, IN 47404

Lennie's 514 E. Kirkwood Ave. Bloomington, IN 47408

Malibu Grill 106 N. Walnut St. Bloomington, IN 47404

Mother Bear's Pizza 1428 E. 3rd St. Bloomington, IN 47401
2980 W. Whitehall Crossing Blvd. Bloomington, IN 47404

Nourish Bar 217 W. 6th St. Bloomington, IN 47404

Pizza X 312 E. 3rd St. Bloomington, IN 47401
1610 W. 3rd St. Bloomington, IN 47404
1791 E. 10th St. Bloomington, IN 47408
2443 S. Walnut Street Pike Bloomington, IN 47401
877 S. College Mall Rd. Bloomington, IN 47401
4621 W. Richland Plaza Dr. Bloomington, IN 47404

Port Hole Inn 8939 E. South Shore Dr. Unionville, IN 47468

Runcible Spoon Cafe & Restaurant 412 E. 6th St. Bloomington, IN 47408

Rush Bowls 1421 N. Dunn St. Bloomington, IN 47408

Scenic View Restaurant 4600 S. State Road 446 Bloomington, IN 47401

SmokeWorks 121 N. College Ave. Bloomington, IN 47404

Smokin' Jack's Rib Shack 505 W. 17th St. Bloomington, IN 47404

Southern Stone 405 W. Patterson Dr. Bloomington, IN 47403

Sweetgreen 210 E Kirkwood Ave, Bloomington, IN 47408

The Chocolate Moose 405 S. Walnut St. Bloomington, IN 47401

The Elm 614 E. 2nd St. Bloomington, IN 47401

The Owlery Restaurant 118 W. 6th St. Bloomington, IN 47404

Trailhead Pizzeria 4303 State Road 446 Bloomington, IN 47401

Truffles Fine Cuisine 1131 S. College Mall Rd. Bloomington, IN 47401

Upland Brewing 350 W. 11th St. Bloomington, IN 47404

Uptown Cafe 102 E. Kirkwood Ave. Bloomington, IN 47408

Village Inn 3619 State Road 46 West Bloomington, IN 47404

GLOBAL CUISINE

Afghan

Samira Restaurant 100 W. 6th St. Bloomington, IN 47404

Burmese

Burma Garden 413 E. 4th St. Bloomington, IN 47408

Cajun

DATS 211 S. Grant St Bloomington, IN 47408

Chinese

Asuka 318 S. College Mall Rd. Bloomington, IN 47401

Best Taste 109 W. 4th St. Bloomington, IN 47404

Chow Bar 216 S. Indiana Ave. Bloomington, IN 47408

Dragon Chinese Restaurant 3261 W. 3rd St. Bloomington, IN 47404

Homey Hot Pot & Sushi 306 N. Walnut St. Bloomington, IN 47404

Lan Ramen & Aqua Tea 250 S. Washington St. Bloomington, IN 47408

Longfei 113 S. Grant St. Bloomington, IN 47408

Mr. Hibachi Buffet 4400 E. 3rd St. Bloomington, IN 47401

Noodle Town 318 S. College Mall Rd. Bloomington, IN 47401

Red 1402 N. Walnut St. Bloomington, IN 47404

French

La Petit Cafe 308 W. 6th St. Bloomington, IN 47404

Mediterranean

Feta Kitchen + Cafe 600 E. Hillside Dr. Bloomington, IN 47401

King Gyros Restaurant 2000 S. Walnut St. Bloomington, IN 47401

Sofra Cafe 340 S. Walnut St. Suite 4 Bloomington, IN 47401

Trojan Horse 100 E. Kirkwood Ave. Bloomington, IN 47408

Turkuaz Cafe 301 E. 3rd St. Bloomington, IN 47401

Indian

Amrit India Restaurant 124 N. Walnut St. Bloomington, IN 47404

India Garden 420 E. 4th St. Bloomington, IN 47401

Taste of India 316 E. 4th St. Bloomington, IN 47408

Italian

Che Bello Kitchen 106 W. 6th St. Bloomington, IN 47404

DeAngelo's 2620 E. 3rd St. Bloomington, IN 47401

Da Vinci 250 S. Washington St. Bloomington, IN 47404

Osteria Rago 419 E. Kirkwood Ave. Bloomington, IN 47408

Japanese

Ami 1500 E. 3rd St. Bloomington, IN 47401

Asuka 318 S. College Mall Rd. Bloomington, IN 47401

Sakura 15 895 S. College Mall Rd. Bloomington, IN 47401

Yatagarasu Ramen Bar 430 E. Kirkwood Ave. Unit 6 Bloomington, IN 47408



Korean

Ami 1500 E. 3rd St. Bloomington, IN 47401
Do Asian Fusion Cuisine & Lounge 404 E. 4th St. Bloomington, IN 47408
Hoosier Seoulmate 1614 W. 3rd St. Bloomington, IN 47404
Korea Restaurant 409 E. 4th St. Bloomington, IN 47408
Mama's Restaurant 2630 E. 10th St. Bloomington, IN 47408
Mura Sushi and Korean Restaurant 1793 E. 10th St. Bloomington, IN 47408
The Bowl 2800 E. Buick Cadillac Blvd. Bloomington, IN 47401
Toto's Uncle Cafe 3297 E. Covenanter Dr. Bloomington, IN 47401

Mexican

3 Amigos Mexican Restaurant 601 N. College Ave. Suite 2 Bloomington, IN 47404
Chubbies Diner 118 E. Kirkwood Ave. Bloomington, IN 47408
El Rancharo 110 E. Winslow Rd. Bloomington, IN 47401
La Charreada 1720 N. Walnut St. Bloomington, IN 47404
La Una Cantina 254 N. Walnut St. Bloomington, IN 47404
Riviera Maya 116 S. Franklin Rd. Bloomington, IN 47405
Social Cantina 125 N. College Ave. Bloomington, IN 47404
Viva Mas 2550 E. 3rd St. Bloomington, IN 47401

Sushi

Homey Hot Pot & Sushi 306 N. Walnut St. Bloomington, IN 47404
Maje Sushi 601 N. College Ave. Suite 5 Bloomington, IN 47404
Mura Sushi and Korean Restaurant 1793 E. 10th St. Bloomington, IN 47408
Sakura 15 895 S. College Mall Rd. Bloomington, IN 47401
Sushi Bar 2522 E. 10th St. Bloomington, IN 47490

Thai

My Thai Cafe 3316 W. 3rd St. Bloomington, IN 47404
My Thai Downtown 402 E. 4th St. Bloomington, IN 47408
Happy Thai Restaurant 519 S. Walnut St. Bloomington, IN 47401
Siam House 430 E. 4th St. Bloomington, IN 47408

Vietnamese

Rush Hour Station 421 E. 3rd St. Suite 8 Bloomington, IN 47401

BARs, PUB FOOD & MORE

Big Woods - Bloomington 116 N. Grant St. Bloomington, IN 47408
Blockhouse Bar 205 S. College Ave. Bloomington, IN 47404
Bluetip Billiards 426 S. College Ave. Bloomington, IN 47403
Brothers Bar & Grill 215 N. Walnut St. Bloomington, IN 47404
Hoppy Wobbles Pub 3876 W. 3rd St. Bloomington, IN 47404
Kilroy's Sports Bar 502 E. Kirkwood Ave. Bloomington, IN 47408
319 N. Walnut St. Bloomington, IN 47404
Nick's English Hut 423 E. Kirkwood Ave. Bloomington, IN 47408
Orbit Room 107 N. College Ave. Bloomington, IN 47404
Serendipity Martini Bar 201 S. College Ave. Bloomington, IN 47404
Sleeper's Bar 2601 N. Walnut St. Bloomington, IN 47404
Steves Place Pool & Pub 2510 W. 3rd St. Bloomington, IN 47404
The Alley Bar 210 W. Kirkwood Ave. Bloomington, IN 47404
The Atlas Ballroom 209 S. College Ave. Bloomington, IN 47404

The Back Door 207 S. College Ave. Bloomington, IN 47404
The Bluebird 216 N. Walnut St. Bloomington, IN 47404
The Office Lounge 3900 E. Third St. Bloomington, IN 47401
The Root Cellar 108 E. Kirkwood Ave. Bloomington, IN 47408
The Sinkhole 313 E. Winslow Rd. Bloomington, IN 47401
The Tap 101 N. College Ave. Bloomington, IN 47404
Upland Brewing 350 W. 11th St. Bloomington, IN 47404
Upstairs Pub 430 E. Kirkwood Ave. Suite 18 Bloomington, IN 47408
Video Saloon 105 W. 7th St. Bloomington, IN 47404
Village Pub 206 N. Walnut St. Bloomington, IN 47404
Wood Shop Brewery 350 W. 11th St. Bloomington, IN 47401
Yogi's Bar & Grill 302 N. Walnut St. Bloomington, IN 47404

COFFEE, TEA, SWEET TREATS, & MORE

Baked 115 N. Washington St. Bloomington, IN 47408
Blu Boy Cafe and Cakery 112 E. Kirkwood Ave. Bloomington, IN 47408
Brilliant Coffee Company 217 W. 6th St. Bloomington, IN 47404
Chocolate Moose 405 S. Walnut St. Bloomington, IN 47401
Crescent Donut 231 S. Adams St. Bloomington, IN 47404
Crumble Coffee and Bakery 532 N. College Ave. Bloomington, IN 47404
1567 S. Piazza Dr. Bloomington, IN 47401
Hartzell's Ice Cream 107 N. Dunn St. Bloomington, IN 47408
Hopscotch Coffee 235 W. Dodds St. #102, Bloomington, IN 47403
212 N. Madison St. Bloomington, IN 47404
Jiffy Treet 223 S. Pete Ellis Dr. # 3A, Bloomington, IN 47408
4727 State Road 46 West Bloomington, IN 47404
Insomnia Cookies 430 E. Kirkwood Ave. Bloomington, IN 47408
Maru Products Artisanal Bakery 120 E 7th St, Bloomington, IN 47408
Parlor Doughnuts 322 E. Kirkwood Ave. Bloomington, IN 47408
Peach Cobbler Factory 113 N College Ave Suite 113, Bloomington, IN 47404
Piccoli Dolci 223 S Pete Ellis Dr Suite#27 Bloomington, IN 47408
Poindexter Coffee 210 E. Kirkwood Ave. Bloomington, IN 47408
Rainbow Bakery 201 S. Rogers I Fell Building Bloomington, IN 47404
Soma Coffeehouse and Juice Bar 322 E. Kirkwood Ave. Bloomington, IN 47408;
1400 E. 3rd St. Bloomington, IN 47401
581 E. Hillside Dr. Suite 104, Bloomington, IN 47401
Square Donuts 1280 N. College Ave. Bloomington, IN 47404
917 S. College Mall Rd. Bloomington, IN 47401
3866 W. 3rd St. Bloomington, IN 47404
The Caffeinated Cook 206 N. Sale St. Ellettsville, IN 47429
The Inkwell 105 N. College Ave. Bloomington, IN 47404
Two Sticks Bakery 415 S. Washington St. Bloomington, IN 47401
Verona Coffee House 3105 S. Sare Rd. Ste 101 Bloomington, IN 47401

CRAFT BEER, WINE, & SPIRITS

Butler Winery & Vineyard 6200 E. Robinson Rd. Bloomington, IN 47408
Cardinal Spirits 922 S. Morton St. Bloomington, IN 47403
Metalworks Brewing Company 108 E 6th St, Bloomington, IN 47408
Oliver Winery 200 E. Winery Rd. Bloomington, IN 47404
Switchyard Brewing Company 419 N. Walnut St. Bloomington, IN 47404

Mother Bear's is known locally and nationally for its award-winning pizza.



Enjoy vegan & vegetarian specialties at Rainbow Bakery (top) & The Owlery (bottom).

Osteria Ragu prides itself on its authentic Italian cuisine and freshly made pasta, bread, and pizzas.



PLAY



WHAT'S UP IN THE UPLANDS? EVERYTHING YOU CAN POSSIBLY IMAGINE!

Whether it's a visit to Sculpture Trails, a day exploring caves, or an exciting evening among IU basketball fans, your opportunities are as endless as our rolling hills!

Local art galleries, farmers' markets, historic theaters, vineyards, state parks, artisan fairs, and events for the whole family. When you encounter the Uplands' combination of urban amenities with strong community ties, you'll understand why so many people who come here want to stay.

Come experience the Hoosier hospitality for which we're famous; we'll help you feel at home.



Uplands Wine Trail

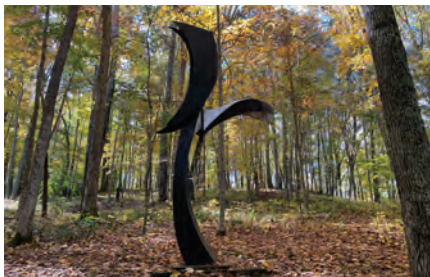
With a perfect blend of terrain, soil, and four distinct seasons, Indiana Uplands has produced incredible wine for nearly 180 years. Today the world-class Wine Trail is home to nine unique wineries where skilled artisans combine decades of experience with innovative techniques to create wines you can only find right here.



Lake Monroe

A must-see in the Indiana Uplands, Lake Monroe is Indiana's largest lake, visited by 1 million people each year.

Popular for a variety of water sports, tourists and residents enjoy the lake on sailboats, pontoons, jet skis, kayaks, and even double-decker party boats with water slides.



Sculpture Trails

Discover over 100 large-scale sculptures deep in the woods of this outdoor museum.



Dubois County Bombers

Enjoy summer baseball in Huntingburg with top college players looking to improve their skills and play professionally.



Bluespring Caverns

Explore America's longest navigable underground river. Descend 400 feet to glimpse elusive cave creatures in near total darkness.



Train Excursions

Step back in time with scenic train rides. Climb aboard the French Lick Scenic Railway or the Spirit of Jasper to experience one-of-a-kind adventures.



West Baden Springs Hotel

Experience this national historic landmark hotel known for its 200-foot atrium dome.



Tivoli Theatre

Catch new films and local productions at Tivoli Theatre, a 20's-era restored entertainment hall.

INDIANA UPLANDS EVENTS AND FESTIVALS

Here is a just a sample of events and festivals that happen every year in the Indiana Uplands. For up-to-date event descriptions and links, be sure to visit www.inuplands.org and follow Indiana Uplands on your favorite social media platform.

January

Paoli Peaks Ski Resort

Paoli, IN

Paoli Peaks is your place to enjoy skiing, snowboarding, and tubing. Open through March when temperatures allow.

Freezefest

Bloomington, IN

A winter festival featuring ice sculptures, live carving demonstrations, and interactive activities for kids.

February

Marsh Madness Sandhill Crane Festival

Linton, IN

This festival coincides with the peak Sandhill Crane and waterfowl migration. Self-guided tours, kids' activities, and much more.

Indiana Heritage Quilt Show

Bloomington, IN

This event brings together over 200 stunning examples of quilted works each year at the Monroe Convention Center.

March

Historic Theaters

Indiana Uplands Region

With more than 15 venues, March is a great time to catch a show. From music halls and large concert venues to intimate theaters and historic movie houses, there is something for everyone in the Uplands.

Underground Caves

Indiana Uplands Region

It may still be frigid outside, but you can still head underground for a cool cave experience. The Uplands' karst topography makes it perfect for caves, including Bluespring Caverns (Mar-Oct), Marengo Cave (year round), and Wyandotte Caves (May-Sept).

April

Little 500

Bloomington, IN

Billed as "The World's Greatest College Weekend," Indiana University's Little 500 is the largest collegiate track cycling race in the U.S.

Dogwood Festival

Orleans, IN

Celebrate the Dogwood Tree Capital of Indiana with arts, crafts, carnival rides, entertainment, food, and a community parade.

Washington Wine & Brew Fest

Washington, IN

Enjoy tastings from wineries and breweries, along with live music, food trucks, and more.

Garden Gate Festival

Huntingburg, IN

Enjoy wine and craft beer while listening to talented jazz musicians.

May

Music Expo

Bloomington, IN

Featuring vinyl, CDs, tapes, music memorabilia, food trucks, live music, and the Cosmic Songwriters Festival.

Harrodsburg Heritage Days

Harrodsburg, IN

This weekend-long festival celebrates the Harrodsburg community with live music, great food, an arts and crafts show, a big parade, and more.

June

Limestone Comedy Festival

Bloomington, IN

Kick off the summer festival season with "Bloomington's funniest weekend." A must-attend for any stand-up comedy fan!

PaoliFest

Paoli, IN

This festival invites attendees to create a community through performances, collaborative art-making, and transformative experiences.

Granfalloon: A Kurt Vonnegut Convergence

Bloomington, IN

This event brings together musicians, artists, thinkers, and people from all walks of life.

Ferdinand Heimatfest

Ferdinand, IN

"Heimatfest" means "home festival" in German, and this event feature activities for the whole family.

Loogootee Summerfest

Loogootee, IN

The streets transform to feature carnival rides, delicious food options, glimmering fireworks, and live music each night.

Limestone Heritage Festival

Bedford, IN

Celebrate the region's rich limestone history with exhibits, events, carvings, and more.

July

Fourth of July Festival

Washington, IN

Fun for all ages at Eastside Park with games, concessions and fireworks.

Thunder Over Patoka Lake

French Lick, IN

Watch the fireworks in the sky over the clear water of Patoka Lake from the beach or boat.

Linton Freedom Festival and Parade

Linton, IN

This annual summer celebration features a carnival, live bands, and a bed race contest.

Patoka Lake Cruises

French Lick, IN

Relax and unwind while you view lake wildlife or book a specialty wine & dessert evening cruise.

August

Jasper Strassenfest

Jasper, IN

One of the largest community festivals in Indiana, this event pays tribute to the region's rich German heritage with polka, lederhosen, brats, games, contests, carnival rides, beer garden, and much more.

Gosport Lazy Days

Gosport, IN

Soak up a few more summer moments with music, a car show, the Lazy Day Parade, a street dance and fish fry!

Bloomington PrideFest

Bloomington, IN

Celebrate LGBTQ+ and find support, resources, and more at this Kirkwood Avenue event.

September

Fourth Street Arts Festival

Bloomington, IN

This annual Labor Day Weekend show hosts more than 100 artisans from across the country.

Latino Cultural Festival

Huntingburg, IN

This vibrant celebration invites you to immerse yourself in the rich traditions of Latin America with music, dance, and cuisine.

Mitchell Persimmon Festival

Mitchell, IN

Celebrate Lawrence County's locally-grown fruit. Carnival rides, a parade, live entertainment, and don't miss the persimmon pudding!

Lotus World Music and Arts Festival

Bloomington, IN

Celebrate cultures from around the world at one of the oldest world music festivals. Lotus has hosted nearly 575 performing artists or ensembles from 120+ different countries and regions.

October

Apple Festival

Bloomfield, IN

Food vendors, carnival, car show, live music, 5K run/walk, and a parade to celebrate Bloomfield.

Fall Foliage Train Ride

Jasper, IN

Hop aboard the Spirit of Jasper train to take in the colors of Autumn and featuring a delicious dinner and beverage.

Lark Ranch

Loogootee, IN

Open weekends in the fall, Lark Ranch features corn mazes, pumpkin patches, train rides, farm animals, slide mountain, carousel, zip line, and more!

Hilly Hundred

Ellettsville, IN

Join over 2,000 cyclists for 2-days of riding on the scenic back roads of Owen and Monroe County.

November

50 Days of Lights

French Lick, IN

French Lick Resort's 50 Days of Lights includes a host of holiday events and family-friendly activities that stretch all the way into the new year.

Canopy of Lights

Bloomington, IN

Experience this magical tradition as Santa flips the switch to transform the downtown square into a sparkling, winter wonderland.

Wilstem Winter Fest

Paoli, IN

Enter a magical winter wonderland venture through the beautiful covered bridge adorned with lights, holiday scenes, and animal families.

December

Holiday Markets and Parades

Indiana Uplands Region

Handmade crafts, cookie walks, visits from Santa, carol sing-a-longs, and light parades ring in the holiday season across the region.

FIND YOUR PLACE TO THRIVE AT WWW.INUPLANDS.ORG

INDIANA UPLANDS

ABOUT DEVELOP WORK LIVE NEWS INNOVATIONS ENJOY & EXPLORE WHAT'S ON GETTING HERE CONTACT

CONCEPT TO CREATION. FAMILY AND FUTURE.

Skill, effort, motivation, Indiana Uplands lives all three. This is a region of entrepreneurs, artisans, students, and scientists, whose brilliant ideas are becoming reality every single day. Come ply your trade and grow your business. Visit for a weekend of lakeside wonder. Stay for a lifetime full of opportunity.

THIS IS UPLANDS MADE

INDIANA UPLANDS

WHO WE ARE

OUR COUNTIES

422,000 POPULATION

4,500 JOBS

100,000 SQ FT OF SPACE

27 MILES OF WATER

95 MILES OF TRAILS

100,000 SQ FT OF SPACE

OUR PROJECTS

The Indiana Uplands website is a product of Regional Opportunity Initiatives (ROI). The mission of ROI is to advance economic and community prosperity in the 11 counties of the Indiana Uplands region (Brown, Crawford, Daviess, Dubois, Greene, Lawrence, Martin, Monroe, Orange, Owen, and Washington counties).



WESTGATE@CRANE

Newcomer & Relocation Guide